



Quality products. Built to last.

pro series juicer



Also available in orange



- ✓ Compact size – 11¾" (30cm) tall, 7½" (19cm) diameter
- ✓ Able to extract up to 10 gallons (37 liters) per hour
- ✓ Quick & easy cleaning  
3 lift-off dishwasher safe parts
- ✓ Quiet, high-torque motor
- ✓ Voltage: AC 115/60, AC 230/50, AC 230/60
- ✓ Proven performance
- ✓ One-year warranty
- ✓ Crafted in the USA



Available from your  
International Export Agent

**SUNKIST**

Tel: 800.383.7141

Fax: 909.822.2125

10730 Bell Court

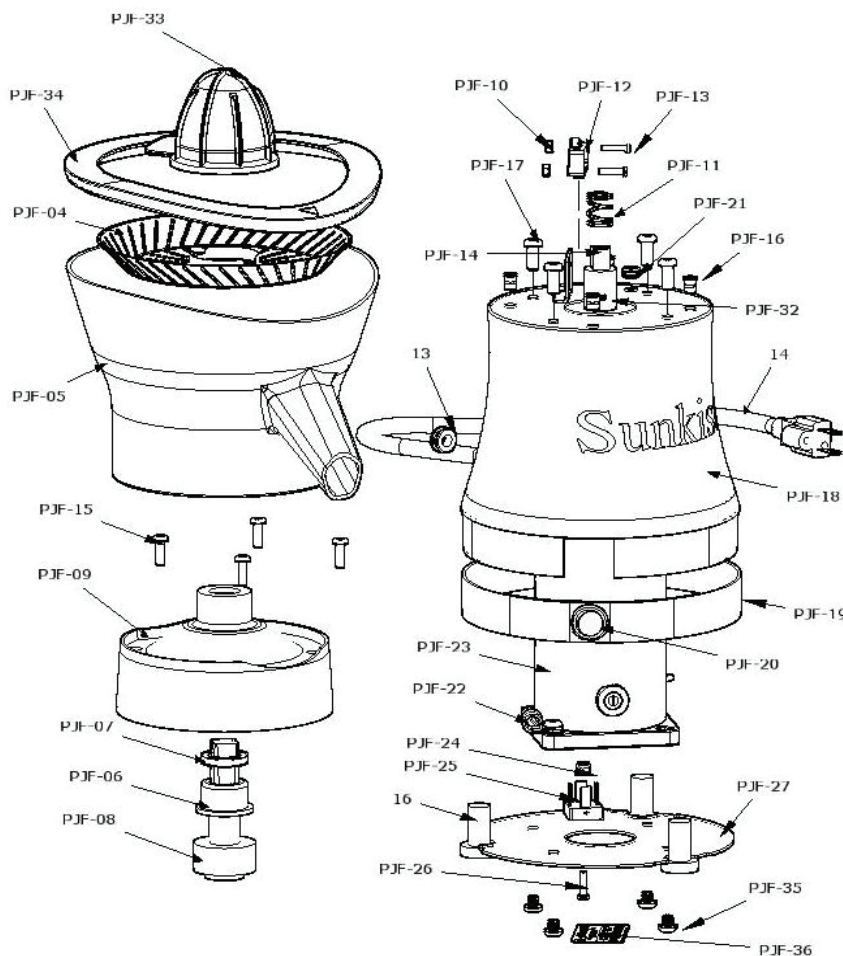
Rancho Cucamonga, CA 91730

[www.sunkistequipment.com](http://www.sunkistequipment.com)

MODEL	COLOR	DESCRIPTION	MODEL	COLOR	DESCRIPTION
PJF-A1	Black	115V 50/60hz 900RPM	PJF-A1OR	Orange	115V 50/60hz 900RPM
PJF-B1	Black	230V 50/60hz 900RPM	PJF-B1OR	Orange	230V 50/60hz 900RPM

**PART DESCRIPTION**

PJF-04	Strainer
PJF-05	Dome Spout Assembly
PJF-05OR1	Dome Spout Assembly Orange
PJF-06	Bearing, Delrin
PJF-07	Rotary Seal
PJF-08	Female Coupling
PJF-09	Dome Covering
PJF-09OR1	Dome Covering Orange
PJF-10	4-40 Nylock Nut
PJF-11	Spring
PJF-12	Micro Switch
13	Electrical Cord Bushing
PJF-13	4-40 x .625 Screw
14	Electrical Cord
PJF-14	Male Coupling
PJF-15	10-32 x .625 Screw
16	Rubber Feet (3)
PJF-16	10-32 Rivet Nut
PJF-17	1/4-20 x .625 Screw
PJF-18	Motor Housing
PJF-19	Trim Ring
PJF-19OR1	Trim Ring Orange
PJF-20	On/Off Switch
PJF-21	Upper Grommet
PJF-22	Wire Clip
PJF-23A	Motor, 115/60V
PJF-23B	Motor, 230/50V
PJF-23C	Motor, 230/60V
PJF-24	6-32 Nylock Nut
PJF-25	Power Rectifier
PJF-26	6-32 x .625 Screw
PJF-27	Base Plate
PJF-32	Roll Pin 1/8"
PJF-33	Extracting Bulb
PJF-34	Flexible Trim Ring
PJF-35	1/4-20 x 1/4 Screw
PJF-36	Data Plate



**SPECIFICATION**

Chrome plated steel housing.  
Corrosion proof plasticvv dome, spout & bowl support  
Listed by UL, CUL, CE, CCC, EPH  
Shipping Weight 13 lbs.  
Net Weight 11½ lbs.  
Overall Dimensions 11¾" tall, 7½" diameter  
Carton Size 9½" W x 9¼" L x 13" H  
Motor Hi-Torque 18.9 in-lbs., 900 RPM